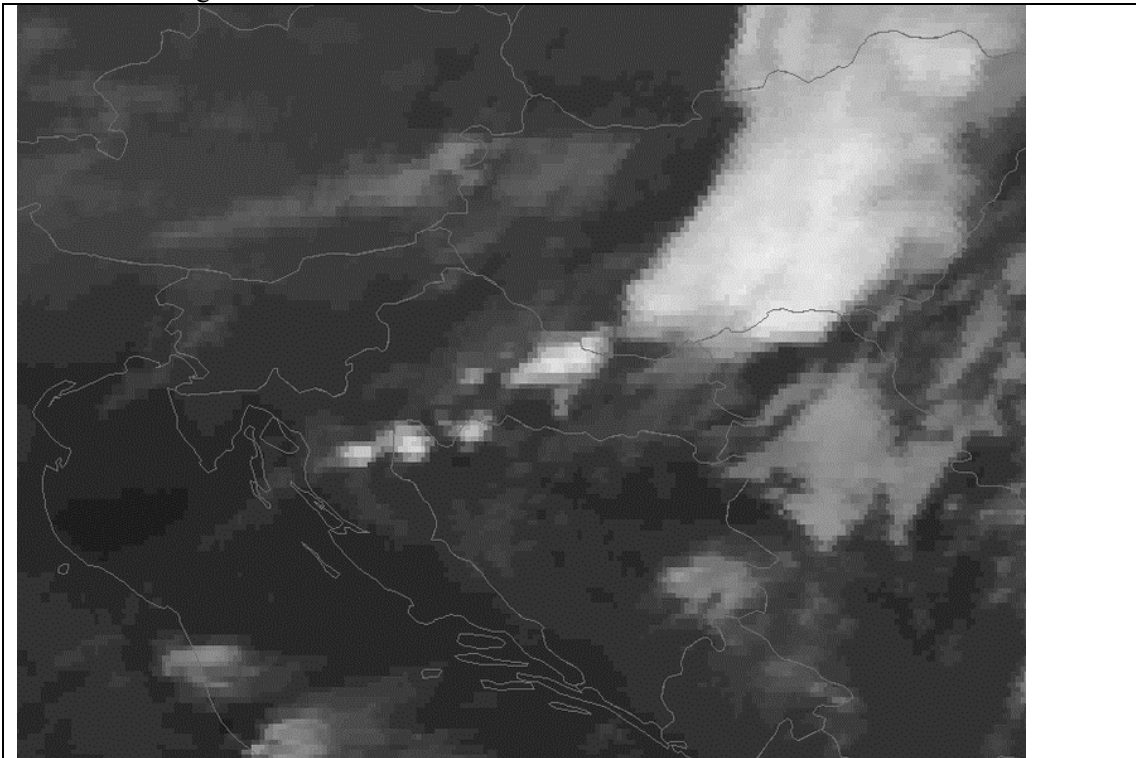


30 August 2003 morning case

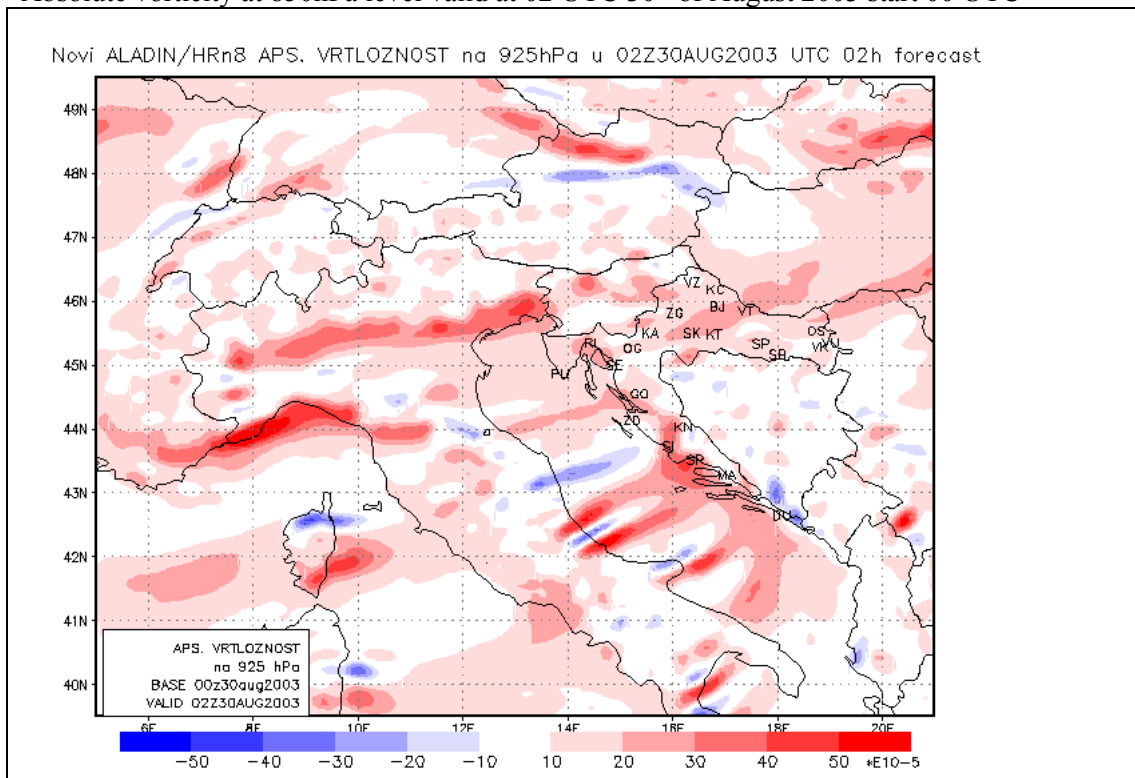
Frontal thunderstorm, with hail and tornado. Position of tornado was  $45^{\circ}25', 17^{\circ}10'$ .

IR satellite image for 0230 UTC

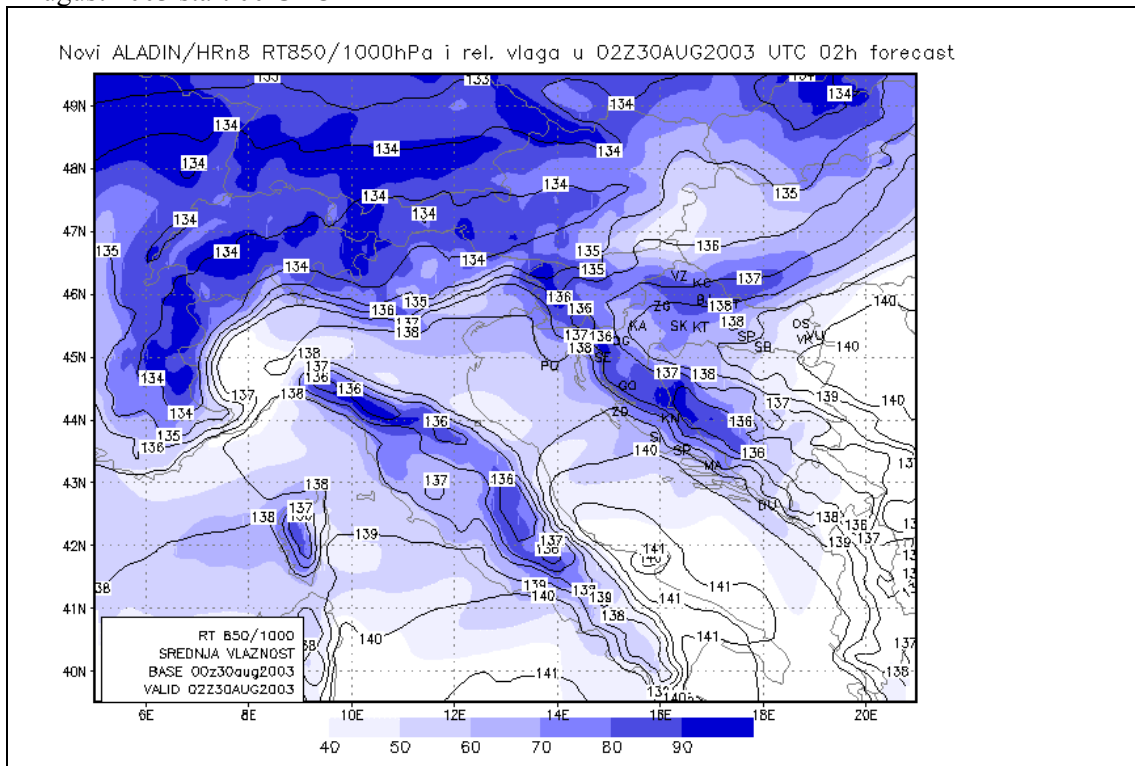


Model version: AL25T1\_op2.

Absolute vorticity at 850hPa level valid at 02 UTC 30<sup>th</sup> of August 2003 start 00 UTC



Relative topography 850/1000hPa and mean relative humidity in layer valid at 02 UTC 30<sup>th</sup> of August 2003 start 00 UTC



10 m wind valid at 20 UTC 04<sup>th</sup> of July 2003 start 00 UTC

